

MemView™

Capture a Speeding Bullet... Every Time.

When you can't afford to miss a high-speed event, MemView delivers. By integrating intelligence with the performance of high-speed cameras, Southern Vision Systems (SVSi) has created a new standard in high-speed video solutions. In addition to this unique technology, the simple plug-n-play operation via USB allows SVSi to deliver more cost-effective solutions to many of today's high-speed video applications, such as ballistics, bio-analysis, and automotive crash testing.



Solutions

- Ballistics
- Crash Testing
- Weapons Testing
- Sports Analysis
- Bio-Analysis
- Manufacturing and Packaging

Features

- USB 2 Interface (no frame grabber needed)
- 1280 x 1024 image size
- 500fps at full resolution
- 16,000 fps max rate
- Up to 12 sec record time (at full resolution and frame rate)
- External trigger

Options

- Image-Cued Intelligence
- Color Imager
- 10 bit grayscale
- IRIG/GPS Timing





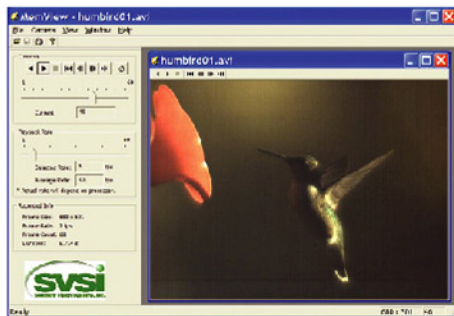
MemView™

Specifications

Image size: 1280x1024 pixels
Frame Rate: 500 fps at 1280x1024
16,000 fps at 1280x32
Lens: 1" C-mount
Shutter speed: 2 μ sec to 300 msec
External trigger: 5V
Ext Trig Delay: 2 μ sec to 300 msec
Ext Trig Edge: Rising or falling
Interface: USB 2
Digital Out: 3.3V TTL
Analog Video: RS-170 (for alignment)
Pre-/Post-frames: 100% pre-trigger
to 100% post-trigger
Processor: Parallel and serial
processors on-board
Memory: 1-8 GB
Video storage: 24-bit AVI
File sequence: bmp, raw, tif, png
Power: +24V @ 2A max
Weight: 3.2 lbs
Volume: 4.25"x4.25"x10"

In its standard configuration, MemView provides a very cost effective solution to high-speed video applications. By recording and storing several seconds of imagery at speeds up to 16,000 fps, MemView provides the necessary means for analyzing most high-speed events. When combined with the optional "Image-Cued Intelligence™," or iCi, MemView can deliver even more powerful solutions.

iCi allows SVSi's cameras to sample the imagery real-time in order to make decisions about triggering, processing, or storing. For example the Image-Cued Trigger function allows a change in the image itself to initiate the recording process. Frames can be stored either as pre-trigger or post-trigger, based on user configuration. The advantages of this are obvious in reduced memory requirements and reduced risk of missing the event in question.



In addition to the internal intelligence, SVSi provides an external software application that includes controls for setting exposure, triggers, and frame size, as well as controlling the acquisition and playback of video.

Available with:



Image-Cued Intelligence™

Southern Vision Systems, Inc.
8215 Madison Blvd, Suite 150
Madison, AL 35758
Phone: (256) 461-7143
Fax: (256) 461-7145
www.southernvisionsystems.com
email: info@southernvisionsystems.com

